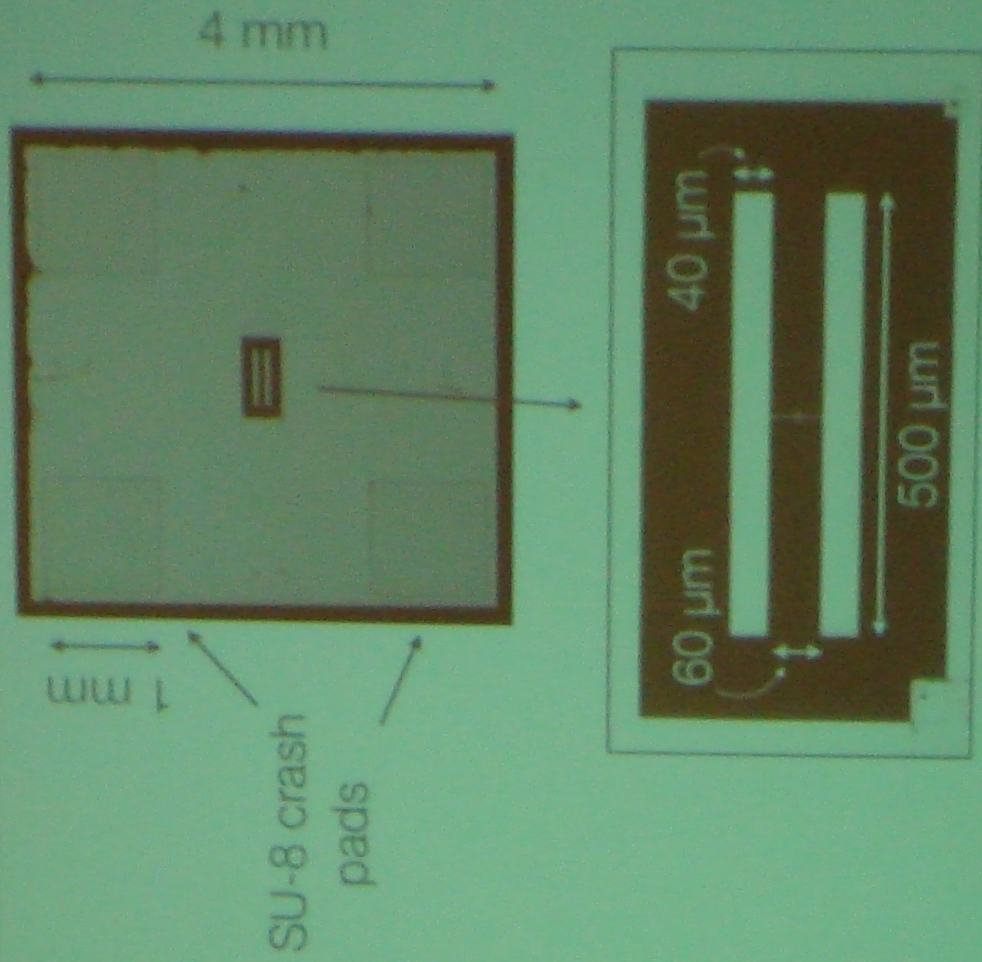
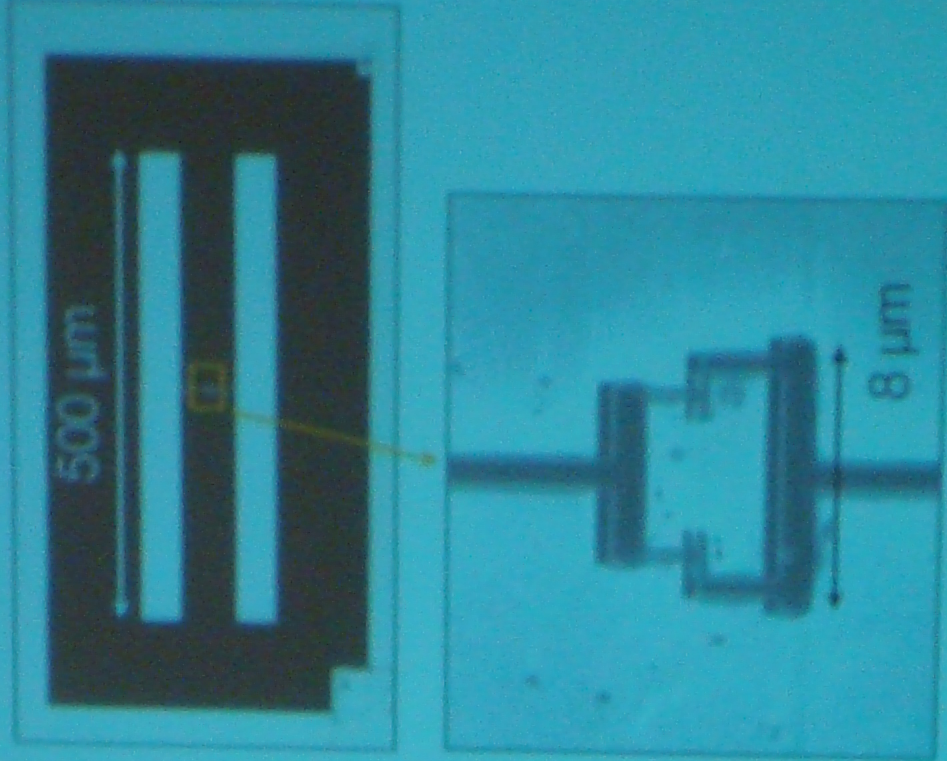
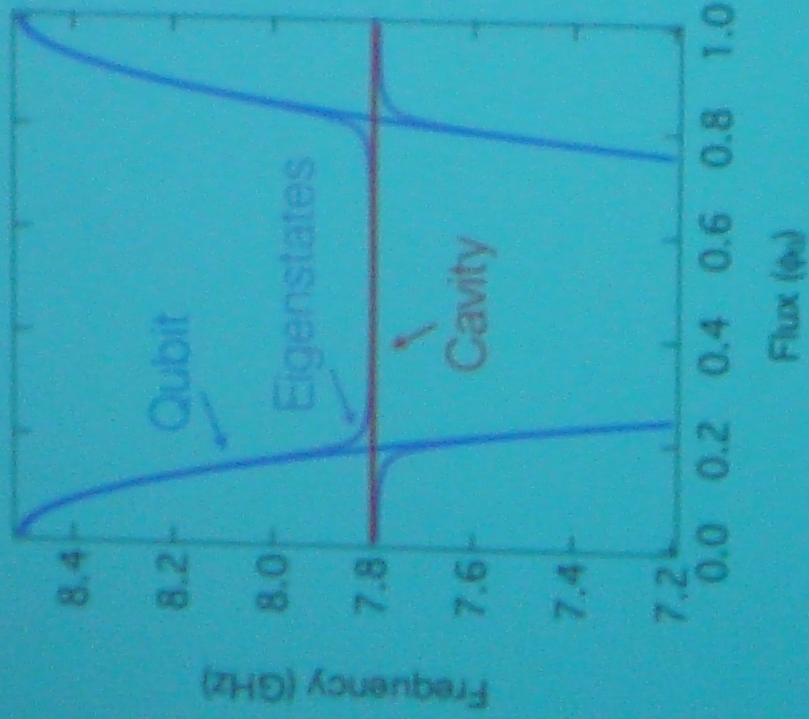


Device design: qubit

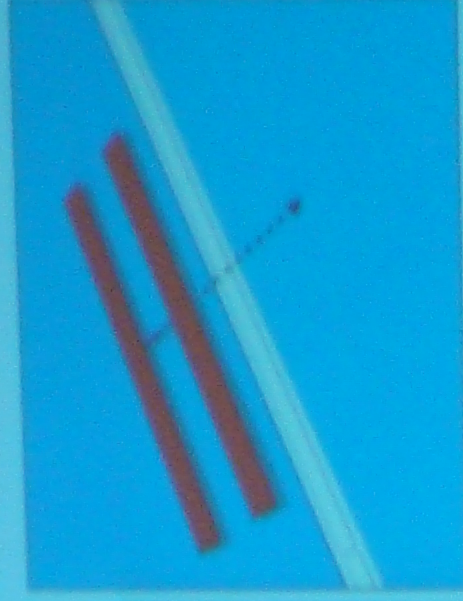
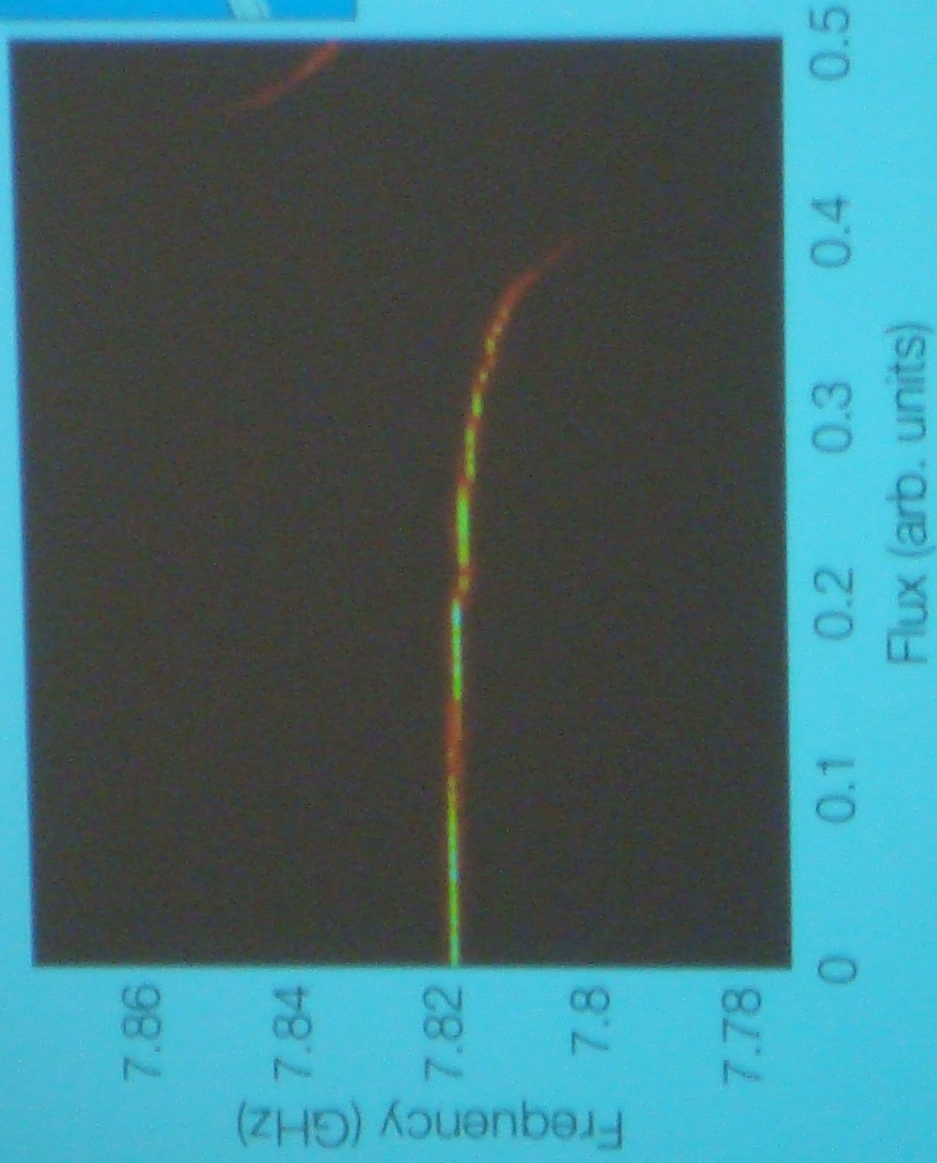
- Transmon qubit
- Designed for $7\ \mu\text{m}$ working distance
- Charging energy $E_c \sim 280\ \text{MHz}$
- Maximum frequency $f_{01,\text{max}} \sim 11\ \text{GHz}$



Measuring g

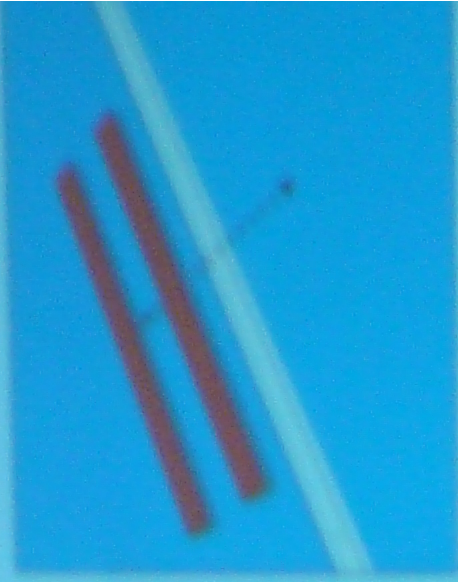


Transmission as a function of position

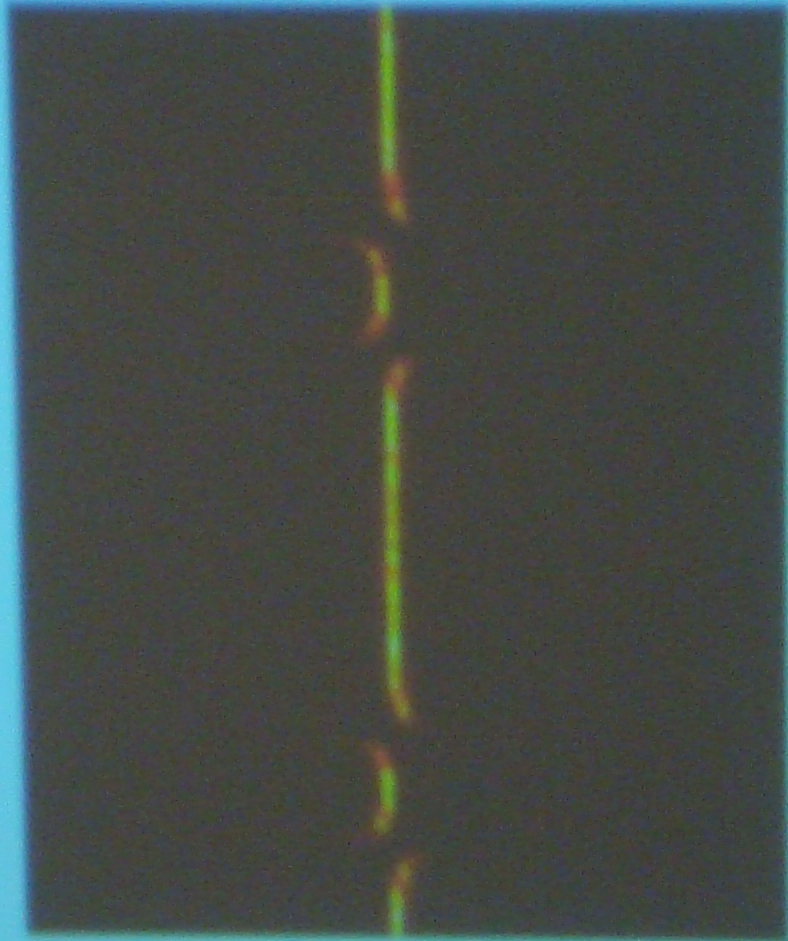


Step number: 1

Transmission as a function of position



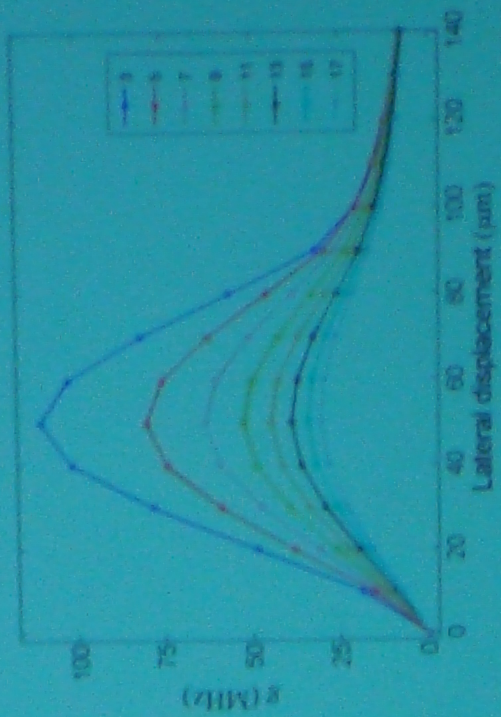
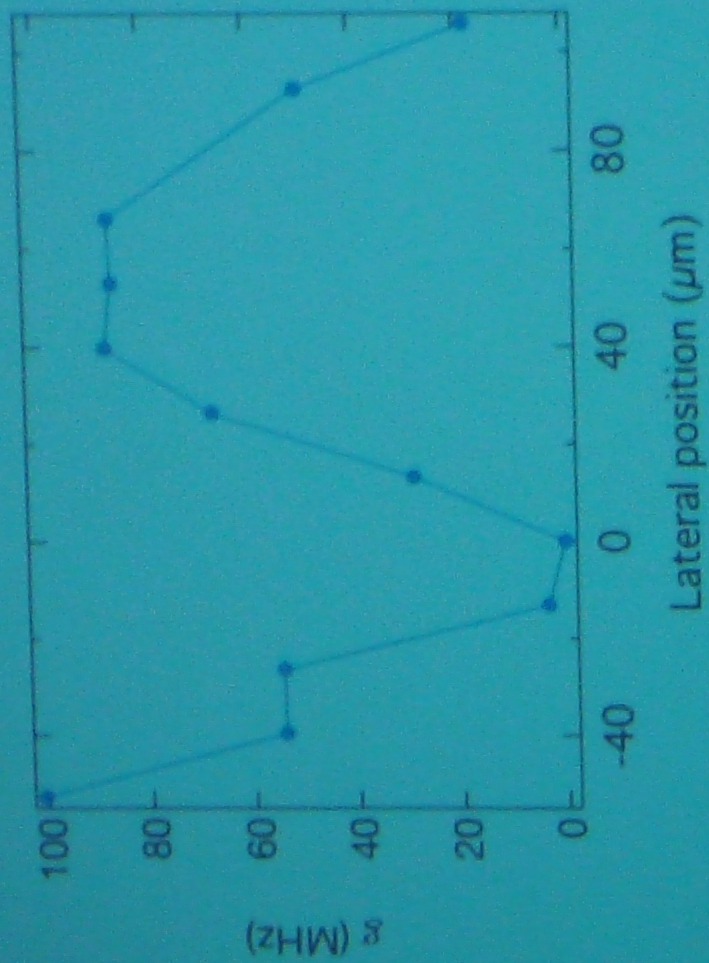
Step number: 4



Flux (arb. units)

Wavelength (nm)

g vs position



Preliminary analysis